



KDDF 국가신약개발사업단
Korea Drug Development Fund

2026 KDDF R&D 워크숍

From Funding to Partnership: Korea Drug Development Fund

2026. 3. 19.

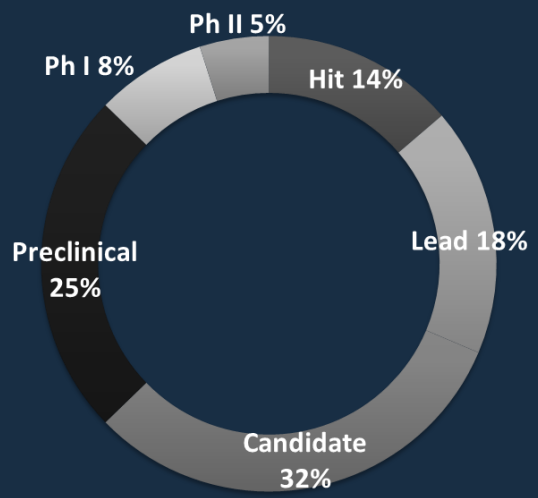
김주연, Ph.D.
사업화지원팀장



553 KDDF 파이프라인 (2026년 3월 기준)

A total **553** projects, as of Mar/2026

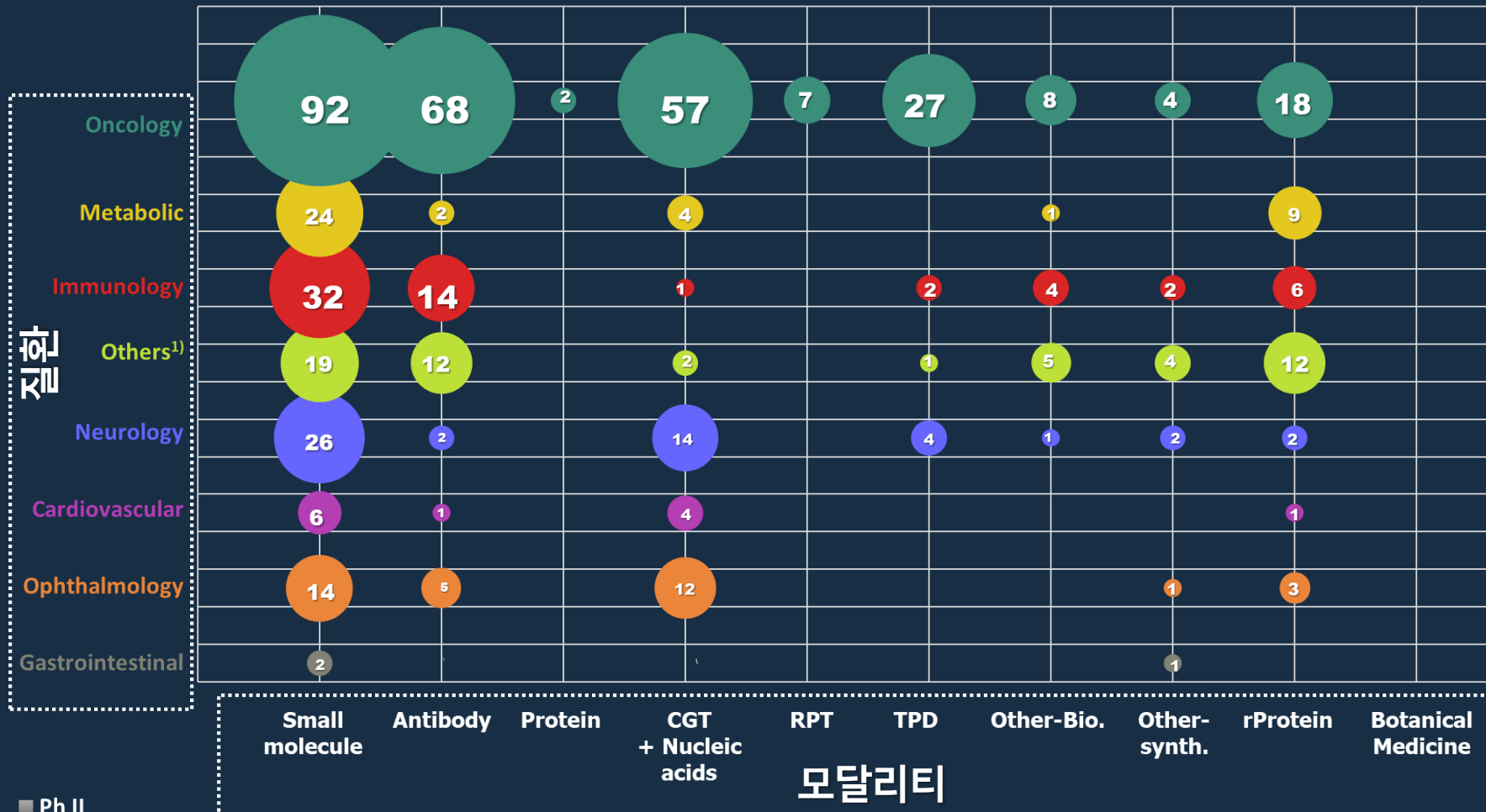
KDDF assets ('21-'25) by development stage



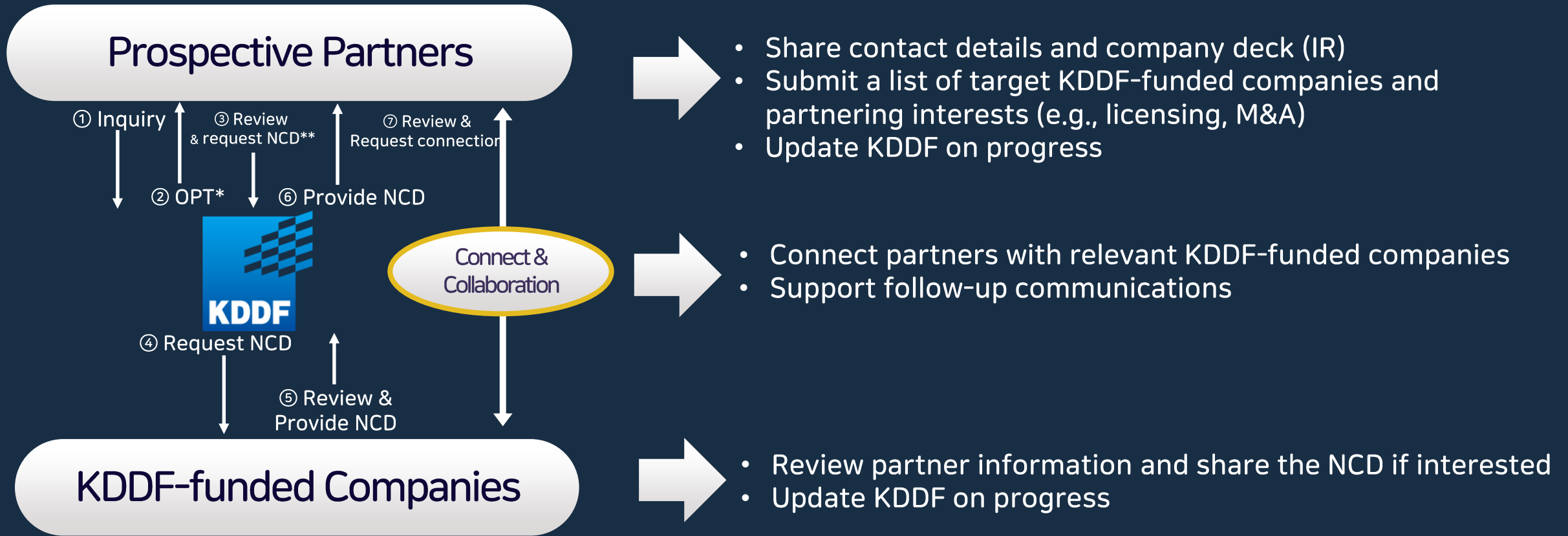
■ Hit ■ Lead ■ Candidate ■ Preclinical ■ Ph I ■ Ph II

Unit: number of assets

Total: 553 assets



¹⁾ Examples of indications classified under the "Other" therapeutic area include dermatology (eg, atopic dermatitis, vitiligo), musculoskeletal disorders (eg, sarcopenia), otology (eg, hearing loss), rare genetic or metabolic diseases (eg, Wilson disease), and miscellaneous conditions such as alopecia and hyperhidrosis.



* One-page Teaser (asset introduction)

** Non-confidential deck

❖ Please note that the NCD provided is strictly for the purpose of these partnering discussions and must not be used for any other purpose.

글로벌 사업개발

Co-Development and Partnership for Globalization

CPG 프로그램

- CPG 컨설팅
- E** Young BD 워크숍 | BD 포럼
- 우수과제 글로벌 진출 촉진 (GEO*)
- E** CPG 심포지엄
- 글로벌홍보: Nature, One-page teaser



글로벌 경쟁력 강화를 위한
BD 역량·파트너십·전략 고도화



투자 연계지원

Ready for Investment & Scale-up in Emerging biotech

RISE 프로그램

- 약물가치평가
- 약물가치평가 (기술보증기금)
- E** Global Biotech Showcase
- 웨бина 교육 시리즈 (계획)



투자 기회 확대와 VC 네트워킹 강화

*GEO: Global Expansion of Outstanding Projects

상시 파트너링과 네트워킹 확장을 기반으로, 사업화지원 사업을 통해 글로벌 공동개발과 라이선싱 가속화



YOUNG
BD
워크숍

교육

주니어 BD를 위한
사업개발 실무 교육
프로그램



- 날짜: 2026년 4월 8일 (수) -9일 (목)
- 장소: 차바이오 컴플렉스
- 참가자: BD 경력 1~5년차 60명
- 강사진: Shadow Lake Group (Canada) & 한국 파트너사 Myriad Partners



BD
포럼

인사이트 공유

당해년도 인사이트 공유를 기반으로 한 차년도 전략 수립 및 시니어 BD 네트워크 구축



- 날짜: 2026년 12월 1일 (화) [매년 12월 첫째 주 화요일 고정]
- 장소: 미정
- 참가자: 시니어 BD 120명
- 프로그램
 - 2024년: Licensing-Out 경험을 보유한 시니어 BD 전문가 Talk
 - 2025년: Deal 성공 사례 공유 · 글로벌 R&D 중개연구자 Talk · 애널리스트 및 글로벌 투자사 패널 · J&J 특별 세션

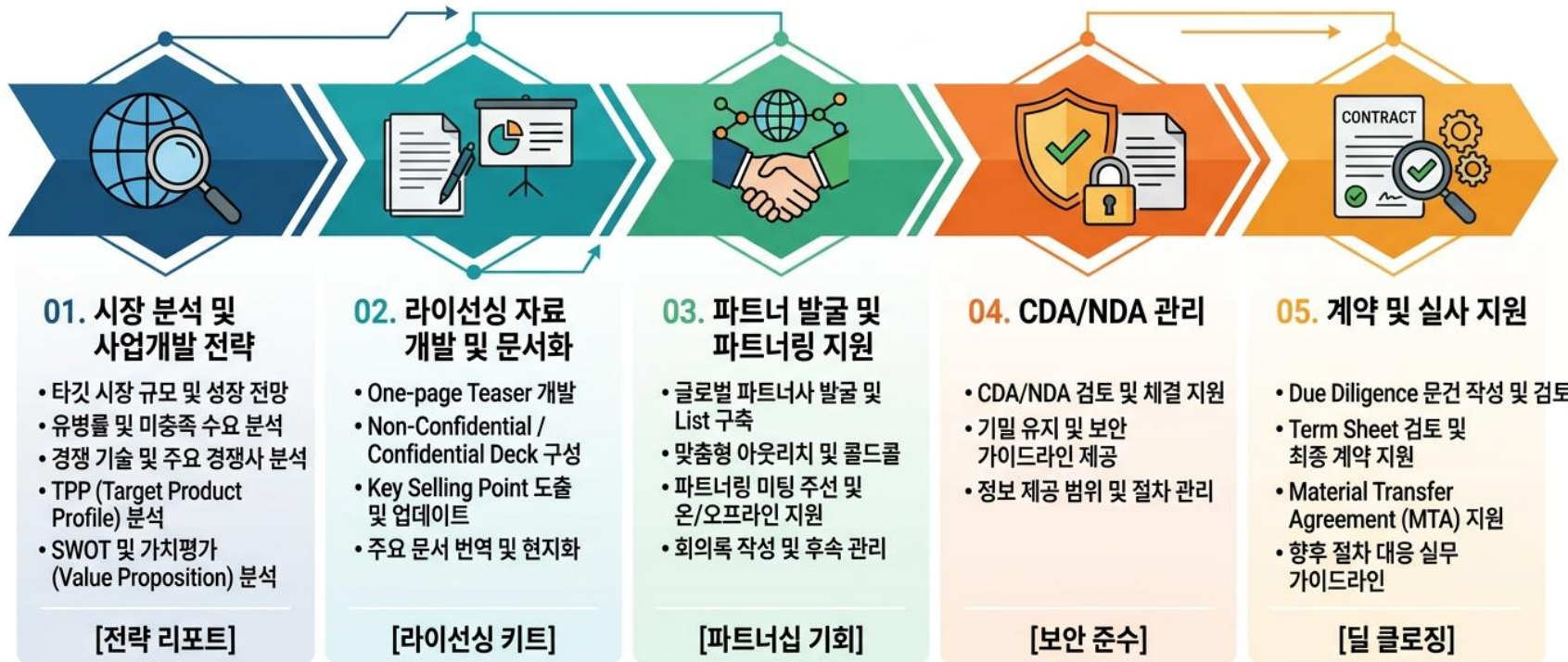
Time	Program
08:30 - 09:00	Registration
09:00 - 09:10	Opening Remarks Yeong-Min Park, CEO, Korea Drug Development Fund
09:10 - 09:30	KDDF Introduction / Group Photo
Session 1 Inside the deal: Stories Behind Recent Korea-Korea Partnerships	
Partnering Beyond the Traditional License: A Strategic Collaboration with a NewCo Sungheon Hong, CFO/VP President, O&P Pharmtech	
RNA Editing-Based Gene Therapy: A New Paradigm in Global Licensing and Collaboration Seung-Wook Lee, President/CEO, Accorion	
AimedBio's Approach to Global Licensing and Strategic Collaborations Nah-Gu Han, CEO, AimedBio	
11:30 - 13:00	Lunch
Session 2 From Science to Strategy: Inside Global Pharma's View of the 2025-2026 Therapeutic Landscape	
Translational Research Strategy aiming for success in Research and Development Sangjun Chae, Senior Principal Scientist, Seize-based Global Pharma	
Biomarker Strategy in Oncology Clinical Development Ohkyu Yoon, Director, Global Sciences	
13:00 - 14:45	Bridging Science and Business: How R&D Empowers Business Development from Discussion to Partnership Jehuk Choo, Scientific Director, Seogen
14:45 - 15:00	Coffee Break
Session 3 Pharma Outlook: Interpreting 2025 & forecasting the 2026 pharma market	
2026 Pharma & Biotech Outlook: Policy Impact, Investment Focus, and the Next Wave of Deals Myeongsik Huh, Head of Innovation Strategy, Research Team, Eviden Security	
Asia regional business development trends, including the adoption of NewCo-based strategies The establishment of Korea's first first-in-class NewCo model Bily Cho, Senior Managing Director, O&P Group Neo Zhang, Managing Director, O&P Group	
15:30 - 16:30	Panel Discussion Moderator: Sangheon Hong, Director, O&P Group Panelist: Myeongsik Huh, Bily Cho
16:30 - 16:50	Coffee Break
Special Session J&J Presentation (by Global Neuroscience Team) QualiFire Challenge Awards	
17:50 - 18:00	Group Photo
Session 4 KDDF BD Connect 2025	
18:00 - 20:00	Networking Night



BD 컨설팅

경쟁입찰을 통해 선정된
사업개발 전문가의
글로벌 BD 컨설팅 지원
[12개사]

글로벌 사업개발(BD) 전주기 통합 지원 프로세스



- 공모·평가를 통해 전문 사업개발 수행기관 선정, 계약체결일 ~ 2026년 12월 15일까지 사업 수행 (후속지원 4개월 유지)
- 과제당 최대 6천만원 이내 지원 (VAT 포함, 기관부담금: 중소기업 25%, 중견기업 30%, 대기업 50%)

[CPG] 우수과제 글로벌 진출 촉진



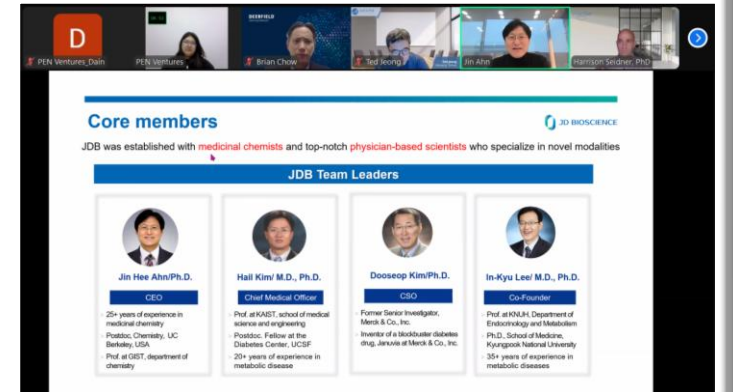
우수과제
글로벌
진출 촉진



글로벌 홍보 지원

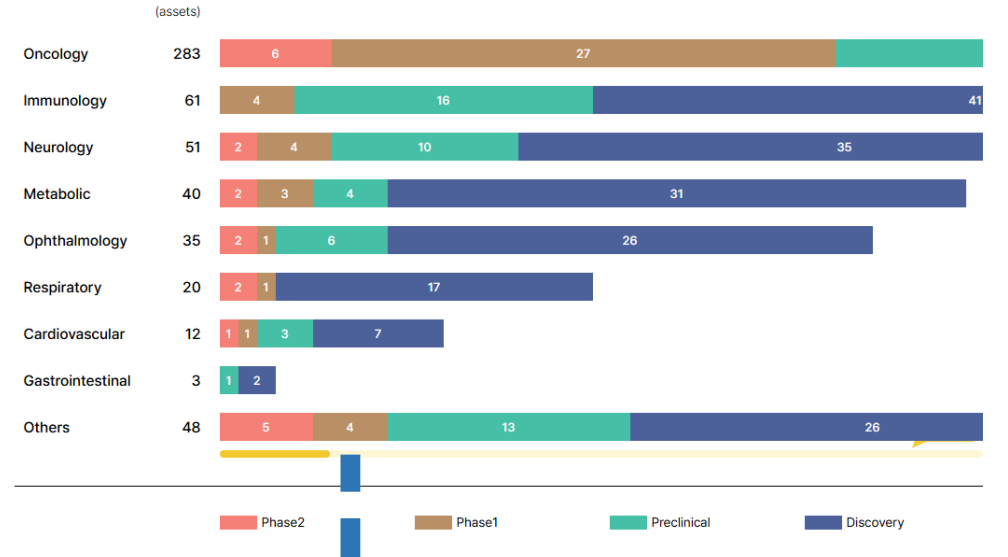
글로벌 바이오 컨퍼런스
피칭 선정 기업 대상
파트너링·피칭·등록비
지원 및 사전 컨설팅 제공
[25개사]

- 사업기간: ~ 2026년 11월 30일
- 지원 내용
 - 글로벌 바이오 행사 참가 지원 (등록비·파트너링·피칭 비용 차등 지원)
 - 학술학회 참가비 지원
 - BD·M&A·투자·데이터 리뷰·글로벌 전략 분야 전문가 컨설팅 제공 (1시간)
- 운영 프로그램: 2025년 글로벌 투자사 대상 IR 세션 운영



[CPG] 글로벌 홍보_One Page Teaser

R&D Pipeline by Development Stage & Therapeutic Area



* 그래프만 숫자를 클릭하면 해당하는 협약과제를 확인할 수 있습니다.
* 가로 스크롤을 이용하면 모든 협약과제의 단계별 구분을 확인할 수 있습니다.

ONCOLOGY (270)

ONCOLOGY

IMMUNOLOGY

METABOLIC

NEUROLOGY

OPHTHALMOLOGY

RESPIRATORY

CARDIOVASCULAR

OTHERS

RS-2024-00337789

Development of inflammatory cell-targeting exosome-based therapeutics for Ophthalmology via **** inhibition

ILIAS Biologics
ILIAS
Biologics

OPHTHALMOLOGY	Lead
Product Type	Exosome-based therapeutics
Indication	Confidential
Target	Undisclosed signaling pathway
MoA(Mechanism of Action)	1) Targeted intracellular delivery of protein inhibitor for cellular signaling 2) Dose-dependent reduction in the expression of pro-inflammatory cytokines and chemokines and subsequent infiltration of neutrophil and monocytes
Competitiveness	1) Inhibition of disease progression by direct suppression of immune cell activity 2) Selective effects on inflammatory responses 3) Biocompatible and safe profiles
Development Stage	Lead
Route of Administration	Confidential
Key Data	The ability of exosomes to target specific cell types is one the key advantages as next-generation drug delivery system (DDS). Modification of exosome transmembrane proteins can change the cellular tropisms of therapeutic exosomes. For targeted delivery of anti-inflammatory drugs to the inflammatory cells, Specifically, ILIAS has introduced inflammatory cell-targeting ligands on the surfaces of engineered exosomes, enhancing their uptake by human monocytic cells (HL-60, shown in the left panel) in vitro and improving the delivery of cyclic recombinase in reporter transgenic mice in vivo (spleen, shown in the right panel). This targeted delivery system is crucial for effectively delivering anti-inflammatory drugs to inflammatory cells, providing a powerful approach for treating various inflammatory conditions including inflammatory retinal degeneration.
IP	27 Patents (Granted 15)

KDDF
Korea Drug Development Fund

kdor_id@kddf.org
KDDF Business Development Team
4/26

- ✓ 과제 선정 이후, 협약 체결 전 주관기관에 사업화지원 프로그램 안내 및 One Page Teaser 작성 요청
- ✓ 글로벌 파트너 공유를 위한 Non-Confidential 수준의 기술 소개 자료(One Page Teaser) 작성 지원
- ✓ 제출된 자료 검토 및 필요 시 내용 보완 요청
- ✓ 협약 체결 이후, 글로벌 파트너 연계 및 BD 활동에 활용

KOREA DRUG DEVELOPMENT FUND

VERSION 5.0

YOUR GATEWAY TO INNOVATIVE DRUG CANDIDATES IN KOREA



Pipeline Details

As of December 2025

Oncology



Drug Class	Indication	Targets	Development Stage			Company	Project ID
			Discovery	Pre	Ph1 Ph2		
Antibody							
ADC	Cancer	PRND (Doppel)	█			Seoul National University	RS-2021-DD116146
	Glioblastoma, Bladder cancer	FGFR3	█ █			AimedBio, Inc.	RS-2021-DD118828
	Gastrointestinal stromal tumor	cKIT (stem cell factor receptor, CD117)	█ █ █			Novelty Nobility Inc.	RS-2021-DD118912
	Rare cancer	Delta-Like Ligand 3 (DLL3)	█ █			IntoCell	RS-2021-DD120990
	Solid Tumor	TROP2 (tumor associated calcium signal transducer 2)	█ █ █			LigaChem Biosciences, Inc.	RS-2021-DD121148
	NSCLC	B7-H3	█ █ █			IntoCell	RS-2022-DD124206
	Gastric cancer, Gastroesophageal junction edema cancer	CLDN18.2	█ █ █			AbTis Co., Ltd.	RS-2023-00219493
	Bladder cancer, Glioblastoma	FGFR3 (Fibroblast Growth Factor Receptor 3)	█ █ █			AimedBio, Inc.	RS-2023-00282706
	Solid tumor	CD171 (L1CAM)	█ █			APITBIO Inc.	RS-2024-00338745
	AML	GSPT1	█ █ █			Therapex Co., Ltd.	RS-2024-00443425
	NSCLC	cMET	█ █ █			Chong Kun Dang pharmaceutical Corp.	RS-2024-00442212
	Metastatic breast cancer	HER3	█ █			IntoCell	RS-2024-00461865
	SCLC, GIST	c-Kit	█ █ █ █			Novelty Nobility Inc.	RS-2024-00461295
	Osteosarcoma, Solid Cancer	LRRC15	█ █			Edisbiotech, Co., Ltd.	RS-2025-02183052

Drug Class	Indication	Targets	Development Stage			Company	Project ID
			Discovery	Pre	Ph1 Ph2		
ADC	PDAC	CDCP1	█ █			Novelty Nobility Inc.	RS-2025-02192979
	Solid tumor	Target A	█ █ █			AimedBio, Inc.	RS-2025-02213655
	HCC & SCLC	***	█ █ █			Boostimmune	RS-2025-25445446
	Solid tumor	NAMPT	█ █ █			Samjin Pharmaceutical Co., Ltd.	RS-2025-25454767
	Solid tumor	undisclosed	█ █ █			AimedBio, Inc.	RS-2025-25455321
BsAb	non-Hodgkin lymphoma, Chronic lymphocytic leukemia	CD20 and CD55	█ █			Korea University	RS-2021-DD115589
	Solid Tumor	B7-H4 (VTCN1) and 4-1BB	█ █ █			ABLBio	RS-2021-DD118355
	NSCLC	EGFR (Epidermal growth factor receptor) and cMET (Mesenchymal-epithelial transition factor)	█ █ █ █			Chong Kun Dang pharmaceutical Corp.	RS-2021-DD118094
	Solid Tumor	Single-regulatory protein a [SIRPα] and Programmed cell death-ligand 1 [PD-L1]	█ █			PharmAbcine Inc.	RS-2021-DD120956
	Solid Tumor	Programmed Death-Ligand 1 [PD-L1] and Cluster of Differentiation 3 [CD3]	█ █ █			MustBio, Inc.	RS-2021-DD120875
	Colorectal cancer	Human Leukocyte Antigen G (HLA-G) and CD3	█ █ █			Y-Biologics	RS-2021-DD121326
	Triple-Negative Breast Cancer	PD-L1 and CD47	█ █ █ █			ImmuneOncia Therapeutics	RS-2021-DD121388
	NSCLC, Lung cancer, Colorectal cancer, Gastric cancer, Triple-Negative Breast Cancer, Ovary cancer	LAG-3, PD-L1	█ █ █ █ █			ABLBio	RS-2021-DD120962
	Cancer	Complement C4d	█ █			Seoul National University	RS-2022-DD123825
	Triple-Negative Breast Cancer	CD73 & CD47	█ █			AprilBio Co., Ltd.	RS-2022-DD124111
	Solid Tumor	Programmed Death-Ligand 1 [PD-L1] and Interleukin-2 [IL-2]	█ █ █ █			MustBio, Inc.	RS-2022-DD123812
	Solid Tumor	B7 Homolog 3 (B7-H3) and TIGFB	█ █ █ █			Theranotics	RS-2022-DD124303

ADVERTISEMENT FEATURE

Korea Drug Development Fund (KDDF)
www.kddf.org/ko

KDDF: advancing Korea's oncology sector globally

The Korea Drug Development Fund (KDDF), Korea's largest non-dilutive funder of drug research and development (R&D), is advancing Korea's oncology sector with a globally competitive, modality-diverse pipeline of cancer therapeutics.

The Korea Drug Development Fund (KDDF), a government-initiated national program jointly supported by three health-related ministries, launched the second phase of its drug development project in 2021. With a \$1.5 billion investment plan, the goal is to foster 1,234 competitive drug projects and achieve at least four US Food and Drug Administration (FDA)/European Medicines Agency (EMA)-approved new drugs by 2030. As of October 2025, KDDF has supported 496 projects, resulting in 34 licensing or co-development deals and 7 FDA orphan drug designations (Fig. 1a). KDDF's oncology portfolio comprises 254 assets categorized by modality (Fig. 1b), with three standout oncology programs highlighted for their innovation.

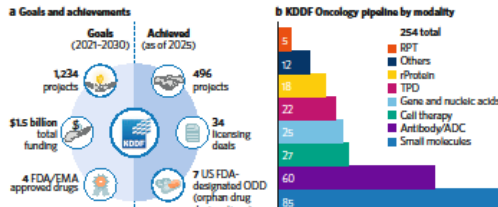


Fig. 1 | Making innovation happen. a. Goals and achievements of the KDDF phase 2 program (2021-2030), including cumulative outputs as of October 2025. b. The oncology portfolio spans diverse modalities from small molecules and antibodies (including ADCs) to cell, gene, and nucleic acid therapies reflecting a balanced, next-generation approach aligned with global innovation trends. ADC, antibody-drug conjugate; RPT, radiopharmaceutical therapy; TPD, targeted protein degradation.

DAAN Biotherapeutics: developing antibodies to target tumor antigens
DAAN Biotherapeutics is developing T-cell receptor (TCR) and T-cell engager (TCE) therapies using its proprietary TCR antibody platform targeting peptide major histocompatibility complexes. In parallel, the company is advancing a pro-body TCE platform, Tumor iTargeting Conditionally Activated T-cell Engager (TACTIC), which includes four key components: a tumor-selective cleavable linker, an anti-albumin Variable domain of the Heavy chain of a Heavy-chain-only antibody (VH-H), an anti-cluster of differentiation 3 (CD3) antibody, and a tumor-associated antigen (TAA)-targeting antibody. Novel cleavable linkers, highly sensitive to target proteases identified through the company's proprietary multi-omics database, were designed using artificial intelligence (AI)-based structural modeling, virtual screening, and in vitro assays. These linkers showed higher protease sensitivity than competitors while maintaining similar stability in patient serum.

Antibody technology, which can be applied to antibody-drug conjugates (ADCs), chimeric antigen receptors (CARs), radiopharmaceutical therapies, and more. ProEn's leading pipeline candidate, PRN 201, is a first-in-class therapeutic developed for metastatic colorectal cancer that is refractory to standard first-line agents such as anti-epithelial growth factor receptor (EGFR), anti-vascular endothelial growth factor (VEGF), and anti-programmed cell death protein 1 therapies.

Conventional EGFR antibody therapies strongly bind to EGFR expressed on normal cells, leading to skin toxicity as a side effect. In addition, they show no efficacy in patients with KRAS proto-oncogene, GTPase (KRAS) mutations.

By contrast, PRN 201 has been engineered to modulate its binding affinity, thereby minimizing damage to normal cells. In vitro studies have demonstrated its efficacy even in KRAS-mutant cell lines, indicating that PRN 201 could be effective regardless of KRAS mutations, while exhibiting higher tumor selectivity.

In animal studies, PRN 201 demonstrated more than five-fold greater antitumor efficacy than standard treatments in a KRAS-mutant colorectal cancer model. It was also shown to rapidly accumulate and persist in tumors while being quickly cleared from systemic circulation, which contributes to its low toxicity.

Beyond PRN 201, ProEn is collaborating to discover further preclinical candidates, utilizing AI-based genetic insights, who come up with the idea along with professor of medicine Don H. Nakano. "This is the solution to the most urgent genetic problem in the world," Nakano said. "I've been thinking about this project in the space of 10 years."

ProEn's leading pipeline candidate, PRN 201, is a first-in-class therapeutic developed for metastatic colorectal cancer that is refractory to standard first-line agents such as anti-epithelial growth factor receptor (EGFR), anti-vascular endothelial growth factor (VEGF), and anti-programmed cell death protein 1 therapies.

When I moved to S&I in 1978, I returned to Goiânia, Brazil, where I'm from, and began population data on cancer. In the Goiânia population-based study, which contains data from 19 pathology laboratories and 8 cases of cancer in local residents is important because in 1957 a radioactive leak occurred at radiotherapy clinic in Goiânia, and around 250 came into the radioactive material. In 2014, I started a cancer group at A. C. Camargo. Now is the second biggest cancer

UNTANGLING THE COMPLEX ROOTS OF CANCER IN BRAZIL

Research hospitals spotlight
Maria Paula Curado studies the risk factors for head, neck, gastric and breast cancers.



Maria Paula Curado started a cancer-epidemiology group at A.C. Camargo Cancer Center.

teaching, but I'm also learning a lot from them. I support the students and help them with their research. A key question I want my students to ask is: what difference am I making to others? In Brazil, we have so much disparity and inequality in health-care access. An important aspect of my research is asking why are people dying from certain cancers? Do they have access to treatment or new drugs?

Early deaths
One issue I think is really important is premature death, because in Brazil a lot of people are dying young from cancer. For example, right now my group is looking at gastric cancers and we found that the number of years of life lost for women with gastric cancer is higher than that for men. So, why are women dying earlier? To answer this, we need to dig into the data and investigate the diagnoses, type of treatment and survival rates. The younger deaths could be because of social expectations: women might be taking care of others in their community and not themselves. A review of 25 studies (1, A. Ferro *et al.*, *Br. J. Cancer* 147, 3090-3101, 2023) showed that eating fewer fruits and vegetables is a risk factor for gastric cancer. So diet could also play a part.

MOUNT SINAI AIMS ONE-MILLION-GENO



The international journal of science / 6 October 2022
nature
MATRIX GAMES
Deep reinforcement learning opens route to faster algorithms for matrix multiplication



Protecting Peru Can technology help Indigenous groups preserve the Amazon?
Invisible touch How marine clouds are affected by aerosols emitted from shipping
Preferential practice US universities favour prestige in faculty hiring and retention

ProEn Therapeutics: ADC therapy for metastatic and colorectal cancer
ProEn Therapeutics is a biotech developing therapies based on bispecific antibodies created with its proprietary

Rznomics: trans-splicing technology for intractable diseases
Rznomics is a gene-therapy biotech company developing an RNA-editing platform based on trans-splicing ribozyme technology. This platform targets

Business Development Team
Korea Drug Development Fund (KDDF)
Seoul, Korea
E-mail: kddf_bd@kddf.org

ADVERTISER RETAINS SOLE RESPONSIBILITY FOR CONTENT

www.nature.com/biopharmad | December 2025 | B17

ADVERTISEMENT FEATURE

individual organs or health systems.

"This was the principle of a genetic revolution in medicine where we'd have every individual's data for every disease that's caused by their genes," says the Harvard geneticist who led the effort.

But the project that was

born in the 1990s, when

genetic variants were

being mapped across

the genome, was

born in the 1990s, when

genetic variants were

being mapped across

the genome, was

born in the 1990s, when

genetic variants were

being mapped across

the genome, was

born in the 1990s, when

genetic variants were

being mapped across

the genome, was

born in the 1990s, when

genetic variants were

individual organs or health systems.

"This was the principle of a genetic revolution in medicine where we'd have every individual's data for every disease that's caused by their genes," says the Harvard geneticist who led the effort.

But the project that was

born in the 1990s, when

genetic variants were

being mapped across

the genome, was

born in the 1990s, when

genetic variants were

being mapped across

the genome, was

born in the 1990s, when

genetic variants were

being mapped across

the genome, was

born in the 1990s, when

genetic variants were

being mapped across

the genome, was

born in the 1990s, when

genetic variants were

individual organs or health systems.

"This was the principle of a genetic revolution in medicine where we'd have every individual's data for every disease that's caused by their genes," says the Harvard geneticist who led the effort.

But the project that was

born in the 1990s, when

genetic variants were

being mapped across

the genome, was

born in the 1990s, when

genetic variants were

being mapped across

the genome, was

born in the 1990s, when

genetic variants were

being mapped across

the genome, was

born in the 1990s, when

genetic variants were

being mapped across

the genome, was

born in the 1990s, when

genetic variants were

individual organs or health systems.

"This was the principle of a genetic revolution in medicine where we'd have every individual's data for every disease that's caused by their genes," says the Harvard geneticist who led the effort.

But the project that was

born in the 1990s, when

genetic variants were

being mapped across

the genome, was

born in the 1990s, when

genetic variants were

being mapped across

the genome, was

born in the 1990s, when

genetic variants were

being mapped across

the genome, was

born in the 1990s, when

genetic variants were

being mapped across

the genome, was

born in the 1990s, when

genetic variants were

individual organs or health systems.

"This was the principle of a genetic revolution in medicine where we'd have every individual's data for every disease that's caused by their genes," says the Harvard geneticist who led the effort.

But the project that was

born in the 1990s, when

genetic variants were

being mapped across

the genome, was

born in the 1990s, when

genetic variants were

being mapped across

the genome, was

born in the 1990s, when

genetic variants were

being mapped across

the genome, was

born in the 1990s, when

genetic variants were

being mapped across

the genome, was

born in the 1990s, when

genetic variants were

individual organs or health systems.

"This was the principle of a genetic revolution in medicine where we'd have every individual's data for every disease that's caused by their genes," says the Harvard geneticist who led the effort.

But the project that was

born in the 1990s, when

genetic variants were

being mapped across

the genome, was

born in the 1990s, when

genetic variants were

being mapped across

the genome, was

born in the 1990s, when

genetic variants were

being mapped across

the genome, was

born in the 1990s, when

genetic variants were

being mapped across

the genome, was

born in the 1990s, when

genetic variants were

individual organs or health systems.

"This was the principle of a genetic revolution in medicine where we'd have every individual's data for every disease that's caused by their genes," says the Harvard geneticist who led the effort.

But the project that was

born in the 1990s, when

genetic variants were

being mapped across

the genome, was

born in the 1990s, when

genetic variants were

being mapped across

the genome, was

born in the 1990s, when

genetic variants were

being mapped across

the genome, was

born in the 1990s, when

genetic variants were

being mapped across

the genome, was

born in the 1990s, when

genetic variants were

individual organs or health systems.

"This was the principle of a genetic revolution in medicine where we'd have every individual's data for every disease that's caused by their genes," says the Harvard geneticist who led the effort.

But the project that was

born in the 1990s, when

genetic variants were

being mapped across

the genome, was

born in the 1990s, when

genetic variants were

being mapped across

the genome, was

born in the 1990s, when

genetic variants were

being mapped across

the genome, was

born in the 1990s, when

genetic variants were

being mapped across

the genome, was

born in the 1990s, when

genetic variants were

individual organs or health systems.

"This was the principle of a genetic revolution in medicine where we'd have every individual's data for every disease that's caused by their genes," says the Harvard geneticist who led the effort.

But the project that was

born in the 1990s, when

genetic variants were

being mapped across

the genome, was

born in the 1990s, when

genetic variants were

being mapped across

the genome, was

born in the 1990s, when

genetic variants were

being mapped across

the genome, was

born in the 1990s, when

genetic variants were

being mapped across

the genome, was

born in the 1990s, when

genetic variants were

individual organs or health systems.

"This was the principle of a genetic revolution in medicine where we'd have every individual's data for every disease that's caused by their genes," says the Harvard geneticist who led the effort.

But the project that was

born in the 1990s, when

genetic variants were

being mapped across

the genome, was

born in the 1990s, when

genetic variants were

being mapped across

the genome, was

구분	약물가치평가	약물가치평가 - IP보증 연계
사업목적	무형자산 정량 평가 및 기술거래 기준 제시를 통해 정보 비대칭을 최소화하고 기술이전 촉진 및 약물개발 전략 방향 제시	기술보증기금 프로그램과 연계하여 약물가치평가, V+IP보증 및 투자 연계 지원
지원대상	국가신약개발사업 협약 과제 (후보, 비임상, 임상1상, 임상2상)	국가신약개발사업 협약 과제 (TRL 4 이상)
지원규모	약 12개 과제 예정 매칭비율: 중소·벤처기업 25%, 중견기업 30%, 비영리기관: 100% 정부지원	약 6개 과제 내외 매칭비율: 중소·벤처기업 25%, 중견기업 30%
사업기간	2026년 3월 ~ 11월	과제당 약 3개월
주요 지원내용	<ul style="list-style-type: none"> • 약물가치평가 수행 • 기술이전 및 라이선싱 전략 수립 지원 • 평가 결과 기반 컨설팅 제공 	<ul style="list-style-type: none"> • 약물가치평가 수행 • V+IP 보증 지원 (최대 40억 한도) • 투자 연계 지원 (기업당 최대 30억 규모 추천) • 사전진단 평가 및 컨설팅



기술사업화

약물가치평가 기반 라이선싱·M&A 가치 분석 및 라이선싱 전략 고도화와 기술 가치(IP 보증) 지원 [12 | 6 개사]



May 27-28, 2026



Upcoming Event: Oct 12-13, 2026

2025 Global Biotech Showcase

페어몬트 엠버서더 호텔
May. 27-28, 2025

참석자	1:1 Partnering	파트너*
380+	450+	67

*AbbVie Ventures, ARCH Venture Partners, Ascenta Capital, Astella Venture Management, LLC, Avidity Partners, Boehringer Ingelheim Venture Fund, DCI Partners Co., Ltd., Eli Lilly and Company, Humboldt Fund, J&J Innovation-JJDC, Lexington Partners, Mass General Brigham Innovation, Novo Holdings, Panacea Venture, Pivotal bioVenture Partners, Playground, Qiming Venture Partners US, Roche, SCI ventures, Solasta Ventures, YAFO Capital, Goldman Sachs Alternatives & Korea major VC/CVC

2025 CPG Symposium

웨스틴 조선 호텔
Sep. 23-24, 2025

참석자	1:1 Partnering	파트너*
450+	380+	67

*MSD, NovoNordisk, J&J, Eli Lilly, Sanofi, Servier, Takeda, BeOne, Abbvie, Astellas, CSL, Verdiva Bio, Asahi Kasei, IceMiller, Hankun, ABL bio, Alteogen, Ligachem Biosciences, Orum Therapeutics, Huons, HK inno.N, SK Biopharmaceuticals, GCBiopharma, LG Chem, CHA Bio Group, Daewoong Pharmaceutical, Celltrion, Samsung Bioepis, Yuhan Corporation, Gi-Innovation, KIBO, Lee&Ko, Bae, Kim&Lee

[RISE] Global Biotech Showcase 홍보



2025 KDDF Global Biotech Showcase

OVERVIEW

Event: 2025 Global Biotech Showcase
 Date: May 27(Tue) ~ 28(Wed), 2025
 Venue: Fairmont Ambassador Seoul (Grand Ballroom & Gallery 7)
 Host: KDDF

PROGRAM 5/27 (TUE)

Time	Program
08:30 - 09:00	Registration
09:00 - 09:10	Opening Remarks (Opening Speech) Yeong-Min Park, Korea Drug Development Fund (Congratulatory Speech) Chang-Yeol Lee, Ministry of Science and ICT
09:10 - 10:40	Session 1 Special Talks and Panel Discussion: NewCo Creation Across the US, China, UK, and Korea (Moderator) Derek Yoon, Solista Ventures (Speakers) Diermienne Leung, AbbVie Inc., Done Koo, Path, Maza General Brigham Innovation, Osong-Tony, Roche Accelerator
10:40 - 11:00	Coffee Break (Group Photo)
11:00 - 11:20	Special Talk Key Considerations for Global VC in Korea's Biotech Ecosystem (Speaker) Yeojung Moon, IMM Investment
11:20 - 12:10	Session 2 VC Panel Discussion: Global vs. Korean Investment Trends & Challenges (Moderator) Will McConnell, Omnic Venture Partners (Panelists) Jiyoung Chan, Novio Venture Partners, Mi Kim, Mirae Asset Capital, Noe-Je, Novo Holdings
12:10 - 13:30	Networking Lunch & Coffee Break
13:30 - 14:00	Special Talk What US Investors look for in an Investment (Speaker) Noe-Je, Novo Holdings
14:30 - 15:30	Round Table Meeting Round 1
15:30 - 16:00	Break
16:00 - 17:00	Round 2
17:00 - 18:00	Break
18:00 - 20:00	Networking Reception

5/28 (WED)

Time	Program
09:00 - 12:00	1:1 Partnering
12:00 - 13:30	Lunch
13:30 - 17:00	1:1 Partnering

CONTACT

02-566-1727 | rsp.tooplan@gmail.com

KDDF
Korea Drug Development Fund

✓ 사전 컨설팅

• 프로그램

시간	프로그램	연사	비고
10:00 - 10:30 (30)	Globalization Strategies thought the Eyes of Korean Venture Capital	Yeojung Moon (IMM Investment / Senior managing director)	라이브
10:30 - 11:00 (30)	NewCo.	Daivd Yang (Lux Capital / Principal)	라이브
11:00 - 11:30 (30)	IR Pitch	Seoungwoo Yoo (Tiberend Strategic Advisors, Inc. / Asst. Vice President)	라이브

✓ Closed IR 세션

✓ 국내외 기관 협력 프로그램

사업화지원 사업 공고 및 상세 안내는 홈페이지 및 LinkedIn을 통해 확인해주시기 바랍니다

<p>GC Cell</p> <p>GC Cell</p> <p>TA(Therapeutic Area) Modality Stage</p> <p>View details</p>	<p>Huons</p> <p>Huons (Attendee)</p> <p>Huons Co., Ltd., a subsidiary of Huons Global Co., Ltd., South Korea (KOSDAQ: 054110), was established in 2018 under the leadership of...</p> <p>TA(Therapeutic Area) Modality Stage</p> <p>View details</p>	<p>ALiAD BIOPHARMA</p> <p>Aliad Biopharma</p> <p>Title of technology: First in class drug for Sarcopenia/Overweight Sarcopenia treatment through mTORC2 inhibition</p> <p>TA(Therapeutic Area) Modality Stage</p> <p>View details</p>	<p>GENIXXCURE</p> <p>Genixcure Inc.</p> <p>GENIXXCURE develops next generation AAV capsids through its proprietary AI system, InsightMover and it also develops AAV gene...</p> <p>TA(Therapeutic Area) Modality Stage</p> <p>View details</p>
<p>SHIFT BIO</p> <p>SHIFTBIO INC.</p> <p>SHIFTBIO is a biotechnology company revolutionizing next-generation drug delivery systems (DDS) using natural nanoparticles...</p> <p>TA(Therapeutic Area) Modality Stage</p> <p>View details</p>	<p>RENATUS</p> <p>Renatus Inc.</p> <p>Renatus is an early-stage biotech company dedicated to developing innovative therapies that directly target and reverse cellular cholesterol...</p> <p>TA(Therapeutic Area) Modality Stage</p> <p>View details</p>	<p>HiCellTech</p> <p>HiCellTech Inc. is a biotech company specializing in the development of innovative anti-cancer therapeutics based on stem cell biology. Our...</p> <p>TA(Therapeutic Area) Modality Stage</p> <p>View details</p>	<p>Progeneer</p> <p>Progeneer Inc.</p> <p>We are a biotech company specializing in vaccine and immunotherapy development based on nano...</p> <p>TA(Therapeutic Area) Modality Stage</p> <p>View details</p>
<p>PROTIER BIOTECH</p> <p>Protier Biotech is a company that develops molecular glue degrader, which have received a lot of attention recently...</p> <p>TA(Therapeutic Area) Modality Stage</p> <p>View details</p>	<p>PANOLOS BIOSCIENCE</p> <p>Panosol Bioscience, Inc.</p> <p>Panosol Bioscience is a forerunner in structure-based protein design and development, with a focus on multi-specific...</p> <p>TA(Therapeutic Area) Modality Stage</p> <p>View details</p>	<p>EYE BIO</p> <p>EyeBioKorea, Inc.</p> <p>EyeBioKorea is a clinical-stage biotech company specializing in the development of therapeutics for ophthalmic disorders, including AMD...</p> <p>TA(Therapeutic Area) Modality Stage</p> <p>View details</p>	<p>ILAb Immunology LAB</p> <p>ILAb Co., Ltd.</p> <p>ILAb is a VC-funded venture company with a specialty in immunotherapy with small molecules. ILAb was co-founded by professors of...</p> <p>TA(Therapeutic Area) Modality Stage</p> <p>View details</p>

CIMPLRX

TA(Therapeutic Area)
Modality
Stage

CIMPLRX is an innovative South Korean biotechnology company at the forefront of AI-driven drug discovery. Their proprietary platform, GENEX-CURE (Genetic Expansion & Knowledge-Collet and Linkover Reconnection), leverages explainable artificial intelligence (XAI) to efficiently identify and optimize novel drug candidates across diverse therapeutic areas. A significant focus for CIMPLRX is the development of next-generation AAK1 (Adaptation-Associated Kinase 1) inhibitors for treating neuropathic pain (ANP), a kinase implicated in pain signal transmission, represents a promising non-opioid target. While Lexicon Pharmaceuticals' AAK1 inhibitor, LXG271 (previously developed in collaboration with Bristol Myers Squibb), has demonstrated clinical proof-of-concept by successfully completing Phase 2 trials for diabetic peripheral neuropathic pain and post-herpetic neuralgia, CIMPLRX seeks to build upon this foundation. Utilizing its GENEX-CURE platform, CIMPLRX has identified promising AAK1 inhibitor candidates, CRQ201 and CRQ202. These candidates are being engineered with the aim of achieving superior pharmacological profiles, potentially including enhanced selectivity for AAK1 over other kinases and a minimized risk of HERG channel inhibition, thereby targeting an improved safety and efficacy window compared to next-generation compounds. CIMPLRX's strategy highlights the power of integrating advanced AI into the drug discovery paradigm, paving the way for the rapid development of optimized therapeutic agents with potentially enhanced clinical outcomes.

KDDF_CIMPLRX_AAK1_2023-02-08_061.pdf

Zincure Corp.

TA(Therapeutic Area)
Modality
Stage

Zincure is developing a novel ALS treatment based on a novel oligomer peptide, which was developed through over 20 years of neurobiology. We have recently completed the candidate. In addition, we are advancing a selective MMP-9 inhibitor barrier (BBB) disruption following stroke. This program is in stage.

Research Overview
Our research focuses on the development of novel therapeutics for neurodegenerative diseases via lysosomal homeostasis and ultimately slow or halt disease progression.

Development of Therapeutics for Neurodegenerative Diseases via Lysosomal Homeostasis and Ultimately Slow or Halt Disease Progression
We investigate the role of lysosomal function in the progression of neurodegenerative diseases and Parkinson's disease. By enhancing lysosomal activation, we aim to reduce protein aggregates and dysfunctional cellular components. Our goal is to restore lysosomal homeostasis and ultimately slow or halt disease progression.

Development of Stroke Therapeutics through Blood-Brain Barrier (BBB) Disruption
In parallel, we are developing treatments for ischemic stroke by focusing on blood-brain barrier (BBB) disruption is a critical event in the pathophysiology of stroke and brain injury. Our research aims to discover compounds that preserve BBB integrity, thereby reducing neuronal damage and improving functional outcomes. Through these two complementary approaches, we strive to contribute to the development of novel therapeutics for major brain disorders.

IR_Zincure_2025.05.07_BH_eng.pdf

<https://partnering.kddf.org/>

Choose your registration type

Attendees Partners

Company List

TA(Therapeutic Area) Modality Stage

Cardiovascular
Gastrointestinal
Immunology
Metabolic
Neuroscience
Oncology
Ophthalmology
Respiratory
Others

MediMabBio

MediMabBio is an innovative biopharmaceutical company specializing in the discovery and development of novel anti-cancer and autoimmune...

Company List

TA(Therapeutic Area) Modality Stage

Small Molecules
Peptide
Antibody
Recombinant Protein
Drug-conjugate
Nucleic acid/Virus
Gene Therapy
Others

Aventi

TA(Therapeutic Area)
Modality
Stage

Company List

TA(Therapeutic Area) Modality Stage

Discovery (hit/lead candidate)
Preclinical (preclinical)
Phase1 (phase1)
Phase2 (phase2)

MediMabBio

MediMabBio is an innovative biopharmaceutical company specializing in the discovery and development of novel anti-cancer and autoimmune...

Celros Biotech

TA(Therapeutic Area)
Modality
Stage

Our Team



**Ellen
Jooyeon
Kim, Ph.D.**

Director, Global
Partnership & BD

[jy.kim@kddf.org](mailto: jy.kim@kddf.org)



**Pauline
Yoonmi Lee,
Ph.D.**

Project manager
GEO, GBS, Nature

[ymlee@kddf.org](mailto: ymlee@kddf.org)



**Jennie
Suhyun
Yoon**

Project Manager
*CPG 심포지엄, CPG 컨설팅,
약물가치평가*

[suhyon@kddf.org](mailto: suhyoon@kddf.org)



**Andrew
Lee**

Project Manager
약물가치평가, YBW

[dglee@kddf.org](mailto: dglee@kddf.org)



**Megan
Kim**

Project Manager
BD 마케팅, 웨비나

[megan.kim@kddf.org](mailto: megan.kim@kddf.org)



**Brian
Kyungmin
Kim**

Project Manager
GBS, OPT

[kmk@kddf.org](mailto: kmk@kddf.org)

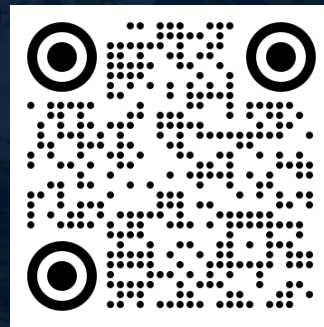
Driving Korea's Future Through Successful Drug Development

Scan here!

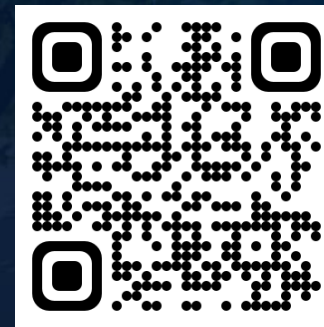


Interested in Korea's Drug Development?
Please contact the KDDF BD Team.

kddf_bd@kddf.org



KDDF e-brochure



KDDF BD Team
LinkedIn